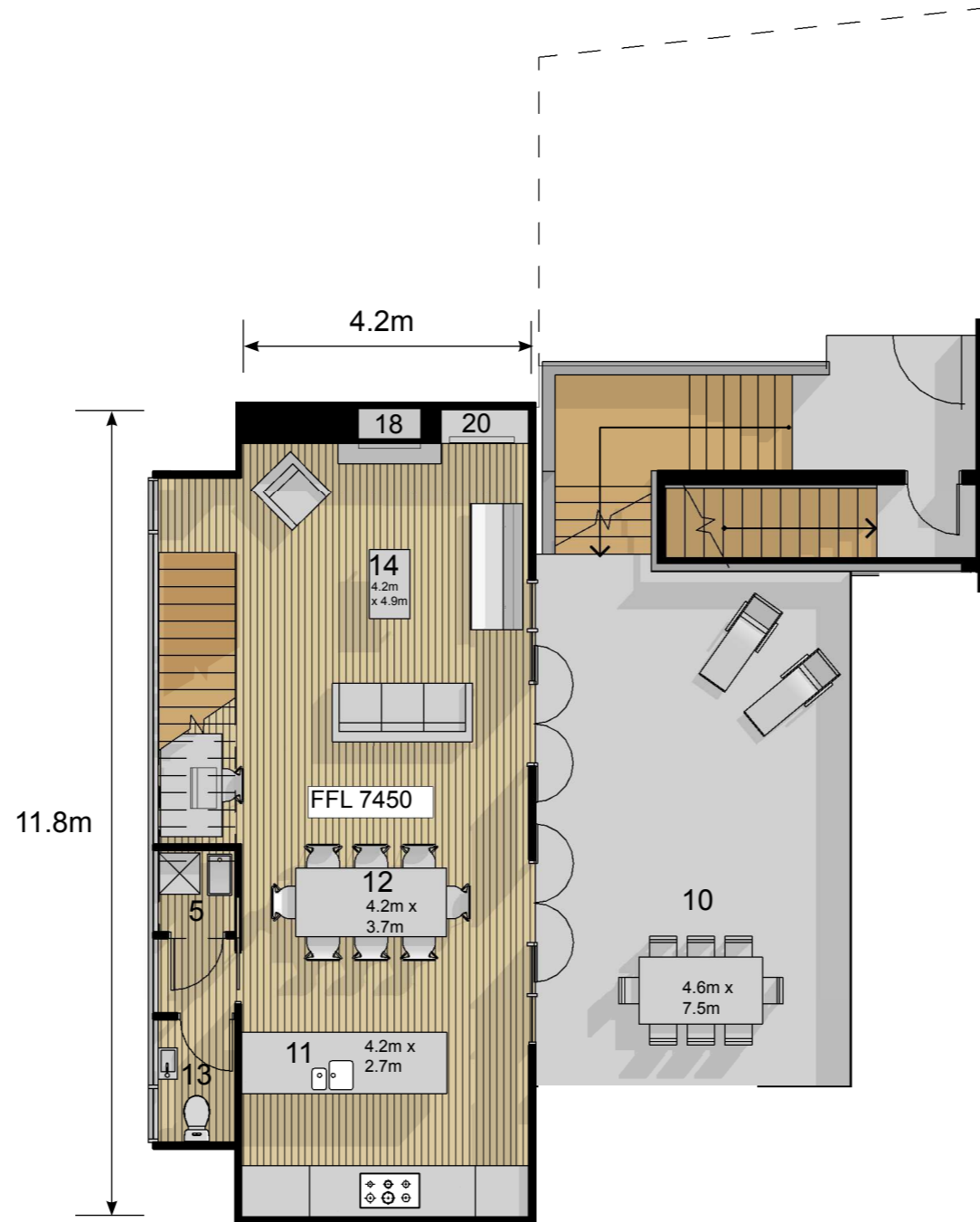
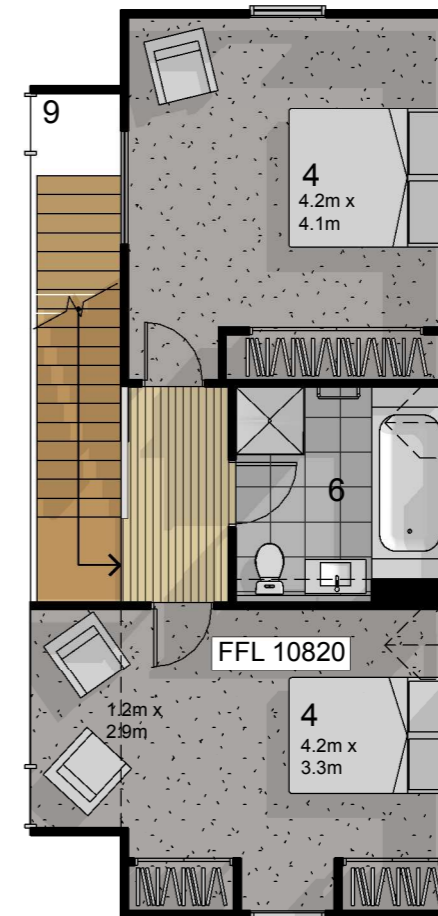


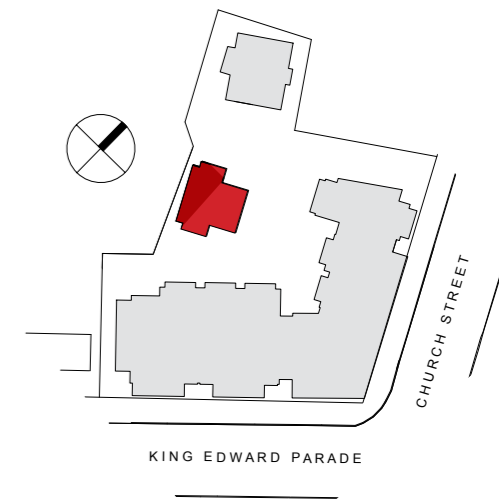
ground level



first level



second level



- KEY**
- garage 1
  - 6 person lift 2
  - entry 3
  - bedroom 4
  - laundry 5
  - bathroom 6
  - ensuite 7
  - robe 8
  - void 9
  - deck 10
  - kitchen 11
  - dining 12
  - guest wc 13
  - living 14
  - mezzanine 15
  - study 16
  - store 17
  - fireplace 18
  - barbeque 19
  - entertainment unit 20

b. Extent of garage with reduced ceiling height

Living (including decks and any mezz.)	164.01m <sup>2</sup>
Garage/Storage (including covered access.)	50.69m <sup>2</sup>
<b>Total Living</b>	<b>214.70m<sup>2</sup></b>

Living & decks - ground level	99.32 m <sup>2</sup>	1069 sq ft
Living - first Level	64.69 m <sup>2</sup>	696 sq ft

**FLOOR FINISHES**

- Timber flooring (including stairs)
- Tile flooring
- Tile flooring (under-floor heating)
- Carpet

# residence 10



Note: All dimensions are indicative only. Floor plan arrangements are subject to change.

