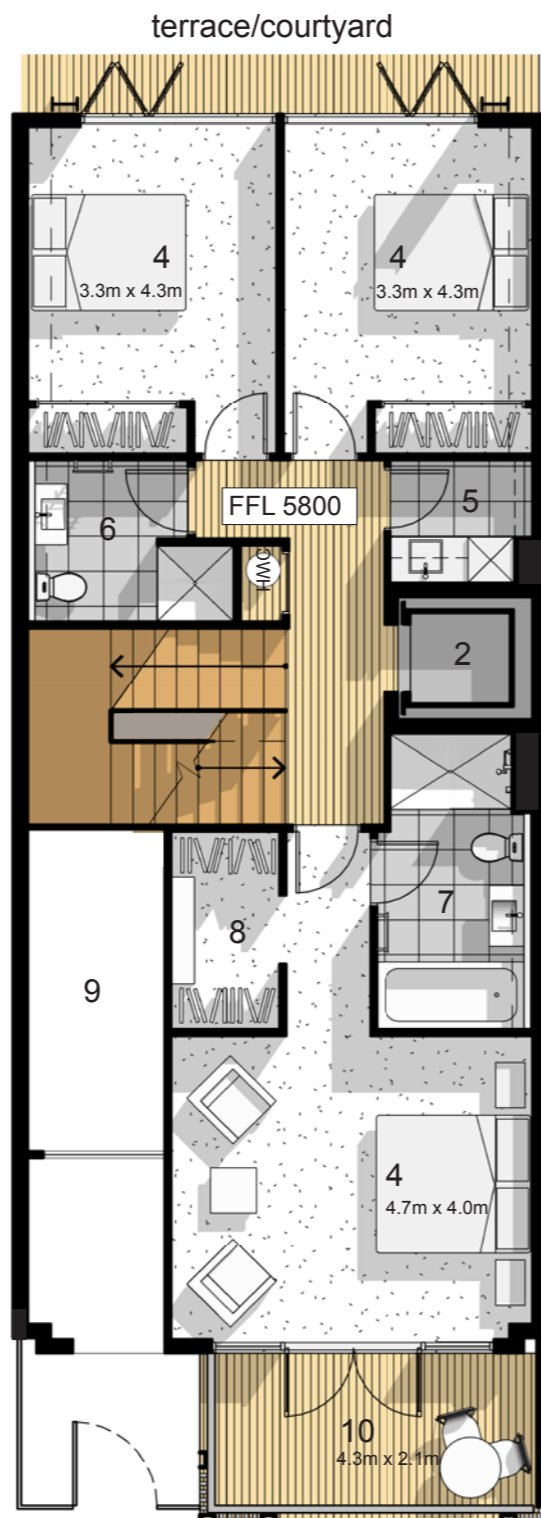
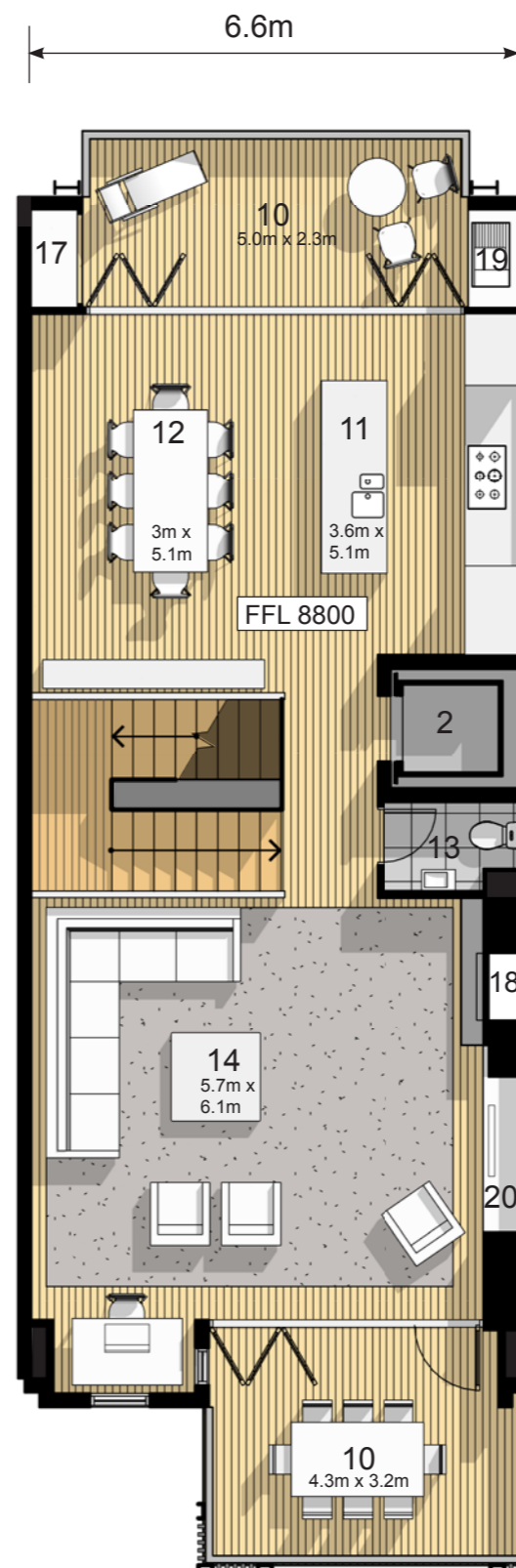


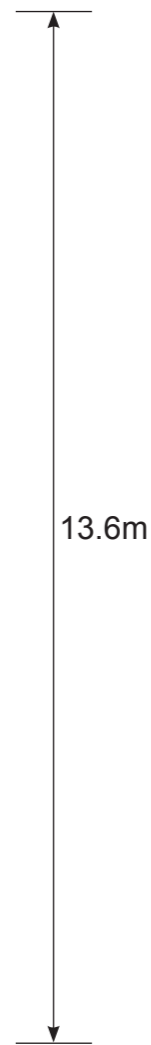
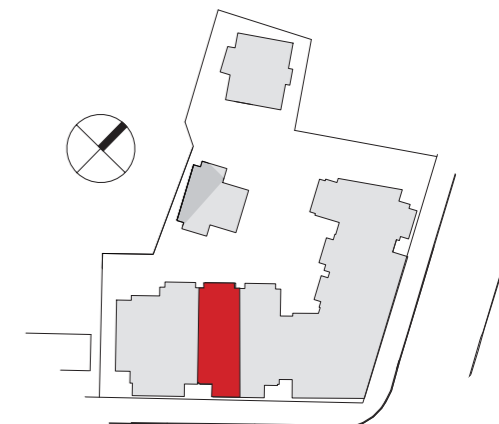
entry/garage level



ground level



first level



KEY

- garage 1
- 6 person lift 2
- entry 3
- bedroom 4
- laundry 5
- bathroom 6
- ensuite 7
- robe 8
- void 9
- deck 10
- kitchen 11
- dining 12
- guest wc 13
- living 14
- mezzanine 15
- study 16
- store 17
- fireplace 18
- barbeque 19
- entertainment unit 20

Living (including decks and any mezz.)	242.41m <sup>2</sup>		
Garage/Storage	55.76m <sup>2</sup>		
<b>Total Living</b>	<b>298.17m<sup>2</sup></b>		
Living & decks - ground level	116.41 m <sup>2</sup>	1253 sq ft	
Living & decks - first Level	126 m <sup>2</sup>	1356 sq ft	

FLOOR FINISHES

- Timber flooring (including stairs)
- Tile flooring
- Tile flooring (under-floor heating)
- Carpet



# residence 3



Note: All dimensions are indicative only. Floor plan arrangements are subject to change.