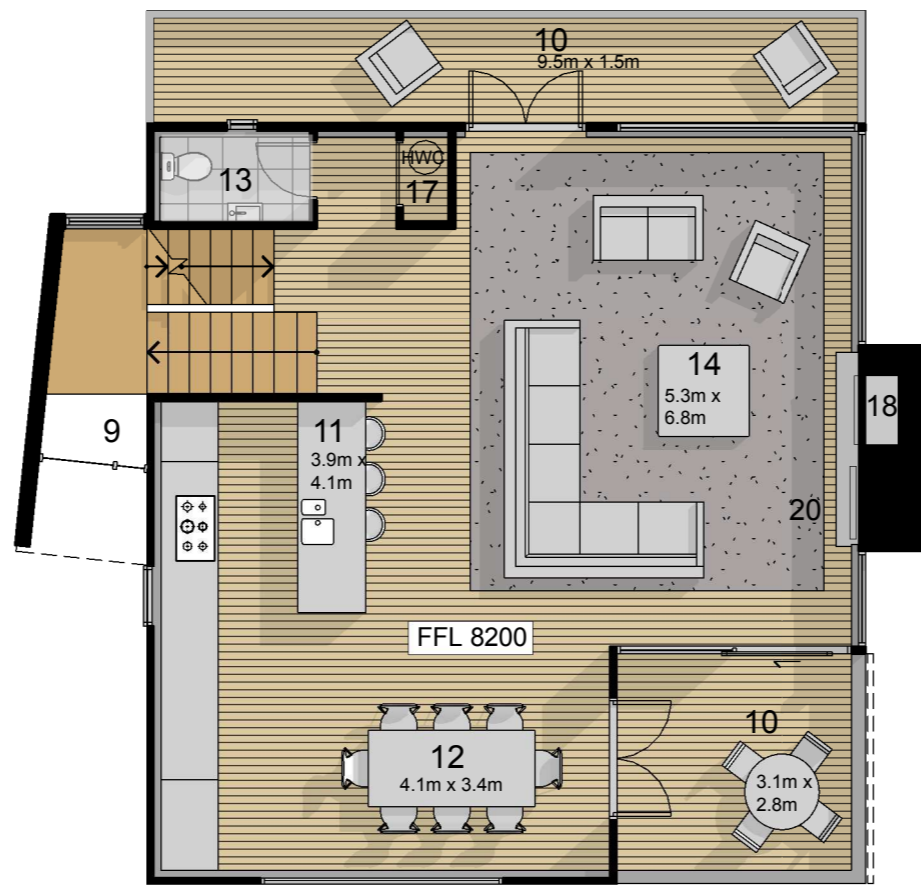


9.3m

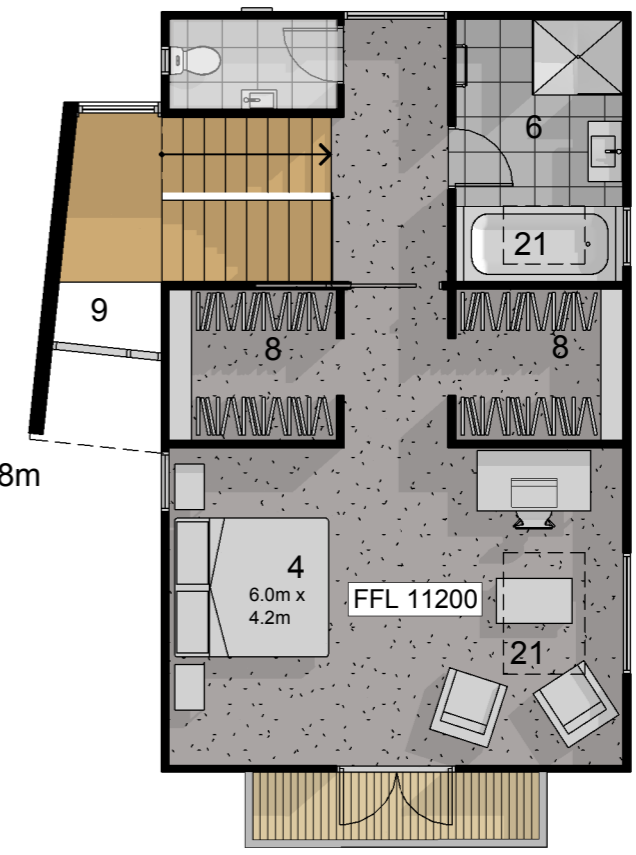
9.8m



ground level



first level



second level

- KEY**
- garage 1
 - 6 person lift 2
 - entry 3
 - bedroom 4
 - laundry 5
 - bathroom 6
 - ensuite 7
 - robe 8
 - void 9
 - deck 10
 - kitchen 11
 - dining 12
 - guest wc 13
 - living 14
 - mezzanine 15
 - study 16
 - store 17
 - fireplace 18
 - barbeque 19
 - entertainment unit 20
 - skylight 21

Living (including decks and any mezz.)	246.31m ²
Garage/Storage	37.09m ²
Total Living	283.40m²

Living - ground level	63.18 m ²	680 sq ft
Living & decks - first level	116.82 m ²	1257 sq ft
Living & decks - second level	66.31 m ²	713 sq ft

FLOOR FINISHES

- Timber flooring (including stairs)
- Tile flooring
- Tile flooring (under-floor heating)
- Carpet

residence 9



Note: All dimensions are indicative only. Floor plan arrangements are subject to change.

